



## Firm Overview

# Who is Astoria Portfolio Advisors?



## Who We Are

APA is an SEC registered asset management company headquartered in New York City since 2017



## Investment Philosophy & Approach

Astoria brings institutional caliber investment strategies and utilizes ETFs to build solutions for investors. Our investment discipline is macro and quantitative.



## Astoria's 3 businesses are

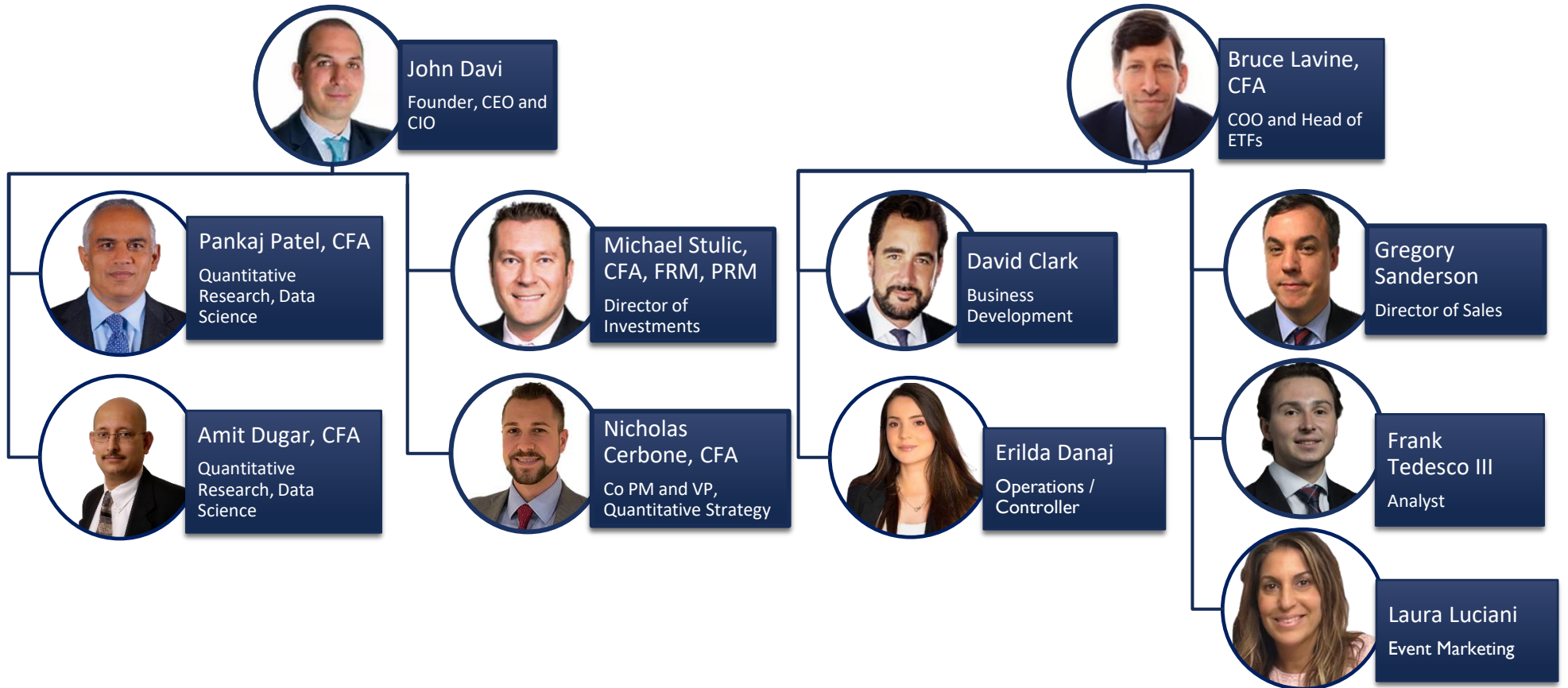
- Managing money for financial advisors, RIAs, and family offices
- Sponsoring and managing exchange traded funds (ETFs)
- Managing money for high-net-worth individuals



Astoria is run by a seasoned investment team led by Founder John Davi. Astoria advises on approximately \$2B in assets across equities, fixed income and commodities

Currently managing over 1,500 client accounts and three ETFs (PPI, ROE, and GQQQ).

# Astoria's Team



# Astoria's Investment Management Process

## A Differentiated, Value-Added Process



### Dynamic ETF Portfolios with a purpose

- Purposefully designed to help reduce portfolio risk during periods of higher volatility and to participate in capital appreciation when markets are more conducive.



### Markets evolve, your allocations should adapt

- Astoria's Investment Committee utilizes a Cross Asset & Quantitative Research Process to make tactical overlay decisions in response to changing macro-economic conditions and fundamentals.



### Improve your ETF portfolio with multi-asset class exposure

- Using rigorous selection criteria, Astoria actively manages a broad universe of ETFs within Equity, Fixed Income and other asset classes such as Commodities, Liquid Alternatives and Cash.



### Open-architecture Process

- Intense focus on picking the right ETFs which match the desired outcome from the investment process. Astoria employs an open architect process amongst all ETF issuers.

# Astoria is a Frequent Contributor to Various Media Outlets



November 2022

“We went into this year defensively positioned. We owned a lot of alternatives, inflation-fighting strategies, short-duration bonds, and most of our exposure was to the quality factor.”

–November 2022

January 2023

“You should always be diversified across factors. That's what we believe in. The research shows that you can get higher up on the efficient frontier when you own factors. Min vol. is one factor; we like dividends, and we like quality..”

–January 2023



# Astoria has a wide range of high performing separate account strategies (SMAs)

## Core Risk Based

Model, Benchmark, Difference	1-Year	3-Year	5-Year	Since Inception
Dynamic 70/30	10.52%	4.77%	7.39%	7.54%
Dynamic 70/30 Benchmark	11.47%	2.53%	6.28%	6.83%
<i>Difference</i>	<i>-0.95%</i>	<i>2.24%</i>	<i>1.11%</i>	<i>0.71%</i>
Dynamic 60/40	9.47%	4.28%	6.62%	6.97%
Dynamic 60/40 Benchmark	9.53%	1.55%	5.11%	5.83%
<i>Difference</i>	<i>-0.06%</i>	<i>2.73%</i>	<i>1.51%</i>	<i>1.14%</i>
Dynamic 50/50	8.55%	3.43%	5.61%	6.24%
Dynamic 50/50 Benchmark	7.61%	0.55%	3.91%	4.81%
<i>Difference</i>	<i>0.94%</i>	<i>2.88%</i>	<i>1.70%</i>	<i>1.43%</i>
Dynamic 30/70	6.51%	2.47%	3.87%	4.45%
Dynamic 30/70 Benchmark	3.83%	-1.45%	1.50%	2.74%
<i>Difference</i>	<i>2.68%</i>	<i>3.92%</i>	<i>2.37%</i>	<i>1.71%</i>
Dynamic 15/85	4.69%	1.63%	2.73%	3.26%
Dynamic 15/85 Benchmark	1.04%	-2.98%	-0.18%	1.31%
<i>Difference</i>	<i>3.65%</i>	<i>4.61%</i>	<i>2.91%</i>	<i>1.95%</i>

% that outperformed for this period?

60%

100%

100%

100%

Source: Astoria Portfolio Advisors. Data as of December 31, 2024. Returns shown are net of fees. All numbers shown are annualized. Past performance is not indicative of future results. Please refer to the end of this presentation for additional portfolio/benchmark disclaimers.

# Astoria runs a wide range of customized strategies to meet client goals

Customized Stock Portfolios

High Income Strategies

ETF Based  
Asset Allocation  
Portfolios

Laddered Bonds

Option Overlay

Astoria has highly satisfied clients and a high client retention rate

# Warranties & Disclaimers

- **Disclaimers | Not FDIC/NCUA Insured | Not a Deposit | May Lose Value | No Bank Guarantee | Not Insured | Past Performance is Not Indicative of Future Returns**
- There are no warranties implied. Astoria Portfolio Advisors LLC is a registered investment adviser located in New York. Astoria Portfolio Advisors LLC may only transact business in those states in which it is registered or qualifies for an exemption or exclusion from registration requirements. Astoria Portfolio Advisors LLC's web site is limited to the dissemination of general information pertaining to its advisory services, together with access to additional investment-related information, publications, and links. Accordingly, the publication of Astoria Portfolio Advisors LLC's web site on the Internet should not be construed by any consumer and/or prospective client as Astoria Portfolio Advisors LLC's solicitation to effect, or attempt to effect transactions in securities, or the rendering of personalized investment advice for compensation, over the Internet. Any subsequent, direct communication by Astoria Portfolio Advisors LLC with a prospective client shall be conducted by a representative that is either registered or qualifies for an exemption or exclusion from registration in the state where the prospective client resides.
- A copy of Astoria Portfolio Advisors LLC's current written disclosure statement discussing Astoria Portfolio Advisors LLC's business operations, services, and fees is available at the SEC's investment adviser public information website – [www.adviserinfo.sec.gov](http://www.adviserinfo.sec.gov) or from Astoria Portfolio Advisors LLC upon written request. Astoria Portfolio Advisors LLC does not make any representations or warranties as to the accuracy, timeliness, suitability, completeness, or relevance of any information prepared by any unaffiliated third party, whether linked to Astoria Portfolio Advisors LLC's web site or incorporated herein and takes no responsibility therefor. All such information is provided solely for convenience purposes only and all users thereof should be guided accordingly. This website and information presented is for educational purposes only and does not intend to make an offer or solicitation for the sale or purchase of any specific securities, investments, or investment strategies. Investments involve risk and unless otherwise stated, are not guaranteed. Be sure to first consult with a qualified financial adviser and/or tax professional before implementing any strategy. This website and information are not intended to provide investment, tax, or legal advice.
- Past performance is not indicative of future performance. Indices are typically not available for direct investment, are unmanaged, and do not incur fees or expenses. This information contained herein has been prepared by Astoria Portfolio Advisors LLC on the basis of publicly available information, internally developed data and other third-party sources believed to be reliable. Astoria Portfolio Advisors LLC has not sought to independently verify information obtained from public and third-party sources and makes no representations or warranties as to accuracy, completeness or reliability of such information. All opinions and views constitute judgments as of the date of writing without regard to the date on which the reader may receive or access the information and are subject to change at any time without notice and with no obligation to update. Any ETF Holdings shown are for illustrative purposes only and are subject to change at any time. This material is for informational and illustrative purposes only and is intended solely for the information of those to whom it is distributed by Astoria Portfolio Advisors LLC. No part of this material may be reproduced or retransmitted in any manner without the prior written permission of Astoria Portfolio Advisors LLC. Investing entails risks, including possible loss or some or all of the investor's principal. The investment views and market opinions/analyses expressed herein may not reflect those of Astoria Portfolio Advisors LLC as a whole and different views may be expressed based on different investment styles, objectives, views or philosophies. To the extent that these materials contain statements about the future, such statements are forward looking and subject to a number of risks and uncertainties.



# Warranties & Disclaimers

- Performance is calculated based on live track records consisting of the historical constituents and weights. Full trailing returns are available upon request. Astoria Portfolio Advisors is a registered investment adviser. Information presented herein is for educational purposes only and does not intend to make an offer or solicitation for the sale or purchase of any specific securities, investments, or investment strategies. Investments involve risk and unless otherwise stated, are not guaranteed. Readers of the information contained on this Performance Summary, should be aware that any action taken by the viewer/reader based on this information is taken at their own risk. This information does not address individual situations and should not be construed or viewed as any type of individual or group recommendation. The model delivery performance shown represents only the results of Astoria Portfolio Advisors model portfolios for the relevant time period and do not represent the results of actual trading of investor assets. Model portfolio performance is the result of the application of the Astoria Portfolio Advisors proprietary investment process. Model performance has inherent limitations. The results are theoretical and do not reflect any investor's actual experience with owning, trading, or managing an actual investment account. Thus, the performance shown does not reflect the impact that material economic and market factors had or might have had on decision making if actual investor money had been managed. Indices are typically not available for direct investment, are unmanaged, and do not incur fees or expenses.
- The model delivery performance results are Net of Astoria Portfolio Advisors' fee and does not include any additional advisory fees charged by advisors employing Astoria's models. Any additional fees charged by an advisor will reduce an investor's return. The data used to calculate the model performance was obtained from sources deemed reliable and then organized and presented by Astoria Portfolio Advisors. The performance calculations have not been audited by any third party. Actual performance of client portfolios may differ materially due to the timing related to additional client deposits or withdrawals and the actual deployment and investment of a client portfolio, the reinvestment of dividends, the length of time various positions are held, the client's objectives and restrictions, and fees and expenses incurred by any specific individual portfolio.
- Benchmarks: The Dynamic 70/30 Strategy performance results shown are compared to the performance of 70% MSCI All Country World Index (NDUEACWF) and 30% Bloomberg Barclays Global Aggregate Bond Index (LEGATRUU). The Dynamic 60/40 Strategy performance results shown are compared to the performance of 60% MSCI All Country World Index (NDUEACWF) and 40% Bloomberg Barclays Global Aggregate Bond Index (LEGATRUU). The Dynamic 50/50 Strategy performance results shown are compared to the performance of 50% MSCI All Country World Index (NDUEACWF) and 50% Bloomberg Barclays Global Aggregate Bond Index (LEGATRUU). The Dynamic 30/70 Strategy performance results shown are compared to the performance of 30% MSCI All Country World Index (NDUEACWF) and 70% Bloomberg Barclays Global Aggregate Bond Index (LEGATRUU). The Dynamic 15/85 performance results shown are compared to the performance of 15% MSCI All Country World Index (NDUEACWF) and 85% Bloomberg Barclays Global Aggregate Bond Index (LEGATRUU). Index results do not reflect fees and expenses and you typically cannot invest in an index.
- Return Comparison: Both the MSCI All Country World Index and the Bloomberg Global Aggregate Bond indices were chosen as they are generally well recognized as an indicator or representation of the stock and bond market and include a cross section of holdings.